

Technical Data Sheet

Astro Thermal Fire PS

Revision 1 - 17th November 2021





> Technical Data	General Product Description, Product Advantages & Dimensions	> Page 1
> Technical Data	Technical Details & Storage & Durability	> Page 2
> Technical Data	Installation Variations	> Page 3-5
> Technical Data	Fitting Instructions	> Page 6
> Technical Data	Tools / Fixings, Intended Use, Maintenance & Storage	> Page 7-8



General Product Description

The Astro Thermal Fire PS are a range of passive fire protection penetration seals designed to firestop insulated metal and combustible plastic pipes.

The Fire Sleeves offer Fire, Acoustic, Thermal and Vapour seal performance to a range of pipes passing through various wall or floor constructions.

The CE Marked range are fire tested in accordance with EN 1366-3 with additional testing and assessments to BS 476 Part 20. The Astro Thermal Fire PS are manufactured from a unique, low smoke, zero halogen intumescent material. The Fire Sleeves are supplied pre-formed and ready to install to suit a variety of pipe diameters.

With a nominal thickness of 25mm, the compressible intumescent sleeve is supplied wrapped in a reinforced aluminium foil allowing it to be cut down its length and retro-fitted around the pipes. This provides an effective fire, smoke and acoustic seal whilst also allowing for some thermal movement. Fire Ratings of EI30, EI60, EI90, EI120 or even up to EI240 minutes are offered depending on the construction type.

Product Advantages

- CE Marked
- 4-in-1 Solution - Fire, Acoustic, Thermal and Vapour Seal
- Up to EI120 Minutes Fire Rating in Gypsum Walls and Solid Floors
- Up to EI240 Minutes Fire Rated in Solid Walls
- Suitable for both Metal and Plastic Pipes
- Simple & quick to install, no fixings or sleeving required
- Available to suit pipe diameters of 15mm to 169mm
- 1 length of Fire Sleeve can replace two fire collars
- Lubrizol Approved
- FBC™ System Compatible



Dimensions

Fire Sleeve Internal Diameter ID (mm)	For Pipes with Nominal Outside Diameter OD (mm)	Nominal Thickness of Sleeve (mm)	Nominal Outside Diameter / Recommended Aperture (mm)	Standard Fire Sleeve Length
17	15-19	25	67	300
21	19-23	25	71	300
27	25-29	25	77	300
34	32-36	25	84	300
42	40-44	25	92	300
48	46-50	25	98	300
54	52-56	25	104	300
60	58-62	25	110	300
67	65-69	25	117	300
76	74-78	25	126	300
80	78-82	25	130	300
89	87-91	25	139	300
102	100-104	25	152	300
108	106-110	25	158	300
114	112-116	25	164	300
127	125-129	25	177	300
134	132-136	25	184	300
140	138-142	25	190	300
159	157-161	25	209	300
160	158-162	25	210	300
169*	162-165	25	219	300

*BS 476 tested only

Technical Details

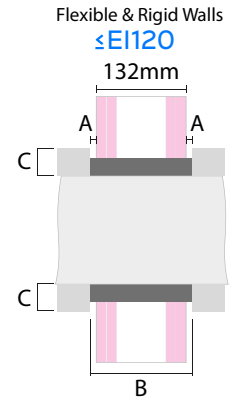
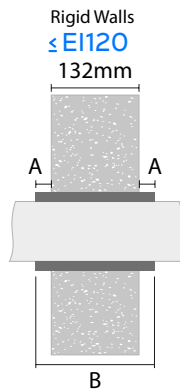
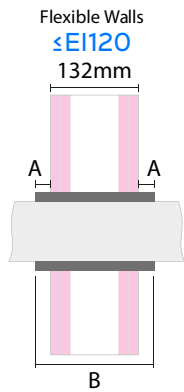
Material	FF109
Colour	Grey
Finish	Aluminium Foil
Density	200 Kg/m ³
Free Expansion Ratio	5:1
Activation Temperature	180 °C

Storage & Durability

Storage	Dry, ambient
Transportation storage temperature	-20°C to +70°C
Working life	48 years
Durability	Type X intended for use in conditions exposed to weather (UV, rain, frost)
Halogen Content	Low
Smoke emission	Low
Material Compatibility	Compatible with common pipe materials including Copper, Steel, PVC, CPVC, PE FBC™ System Compatible



Installation Variations



Test Standard	Pipe Size Range (mm)	Pipe Wall Thickness (mm)	Material	Min. Protrusion "A" (mm)	Min. Sleeve Length "B" (mm)	Pipe Insulation* Required	Fire Rating	End Cap Configuration	Report No.
EN 1366-3	15	1-14.2	Copper, Cast Iron, S/Steel, M/Steel	9	150	Y	E120	U/C, C/C	ETA 20-1337
EN 1366-3	15-159	2-14.2	Copper, Cast Iron, S/Steel, M/Steel	9	150	Y	E120/EI30	U/C, C/C	ETA 20-1337
EN 1366-3	15-43	1.8-3.2	PVC-U / PVC-C	24	180	N	E120	U/C, C/C	ETA 20-1337
EN 1366-3	15-82	3.2	PVC-U / PVC-C	24	180	N	E120	U/C, C/C	ETA 20-1337
EN 1366-3	15-110	3.2	PVC-U / PVC-C	24	180	N	E120	U/C, C/C	ETA 20-1337
EN 1366-3	160	3.2	PVC-U / PVC-C	24	180	N	E120	U/C, C/C	ETA 20-1337
EN 1366-3	15-40	3.0-4.3	PE, ABS, SAN+PVC	24	180	N	E120	U/C, C/C	ETA 20-1337
EN 1366-3	90	3.5	PE, ABS, SAN+PVC	24	180	N	E120	U/C, C/C	ETA 20-1337
EN 1366-3	15-110	4.3	PE, ABS, SAN+PVC	24	180	N	E120	U/C, C/C	ETA 20-1337
EN 1366-3	15-160	6.2	PE, ABS, SAN+PVC	24	180	N	E190	U/C, C/C	ETA 20-1337

Test Standard	Pipe Size Range (mm)	Pipe Wall Thickness (mm)	Material	Construction Type	Min. Protrusion "A" (mm)	Min. Sleeve Length "B" (mm)	Pipe Insulation* Required	Fire Rating	End Cap Configuration	Report No.
EN 1366-3	15-110	3.2	PVC-U / PVC-C	Solid Wall Only Min. 150mm	0	150	N	E1240	U/C, C/C	ETA 20-1337

Service Support must be max. 150mm from the surface of the wall

Seals must be minimum 200mm apart

The seal must be friction fitted within an aperture nominally 50mm larger than the outside diameter of the pipe For flexible walls constructed with steel studs then the wall can be fitted with or without cavity insulation

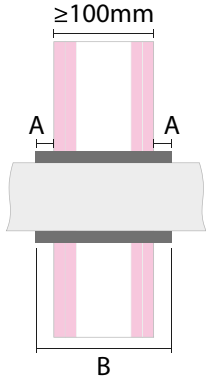
Rigid Walls must comprise concrete, aerated concrete or masonry with a minimum density of 650 kg/m³ (wall type A, see ETA) or concrete or masonry with a minimum density of 1100 kg/m³ (wall type B).

If the wall is thicker than 132mm the seal must be longer to maintain the 24mm protruding from each face PE includes PE-LD, PE-MD, PE-HD, PE-X according to EN 12201-2, EN 1519-1 or EN 12666-1

* Pipe Insulation must be Rockwool Rocklap H&V Pipe Section, min. 40mm thick (dimension "c"), density 120 kg/m³, class A1/A2

Installation Variations

Flexible & Rigid Walls



Test Standard	Pipe Size Range (mm)	Pipe Wall Thickness (mm)	Material	Min. Protrusion "A" (mm)	Min. Sleeve Length "B" (mm)	Pipe Insulation Required	Fire Rating	End Cap Configuration	Report No.
EN 1366-3	32	2.9	Aquatherm Blue Pipe PP-R	25	150	N	EI120	C/C	RF15079
EN 1366-3	40	3.7	Aquatherm Blue Pipe PP-R	25	150	N	EI120	C/C	RF15079
EN 1366-3	125	11.4	Aquatherm Blue Pipe PP-R	25	150	N	EI90	C/C	RF15079

Service Support must be max. 150mm from the surface of the wall

Seals must be minimum 200mm apart

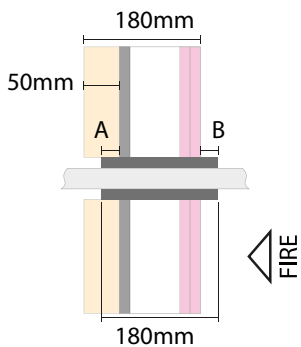
The seal must be friction fitted within an aperture nominally 50mm larger than the outside diameter of the pipe

For flexible walls constructed with steel studs then the wall can be fitted with or without cavity insulation

Rigid Walls must comprise concrete, aerated concrete or masonry with a minimum density of 650 kg/m³ (wall type A, see ETA) or concrete or masonry with a minimum density of 1100 kg/m³ (wall type B).

Flexible Wall (external)

EI90



Construction Build-Up

Celotex PIR Foil Faced Insulation 50mm thick / 31kg/m³

Siniat GTEC Weather Defence Board SE 1x12.5mm

Rockwool ProRox SL920 Rock Fibre Insulation 100mm thick / 45kg/m³

Metsec Steel Stud 90mm wide

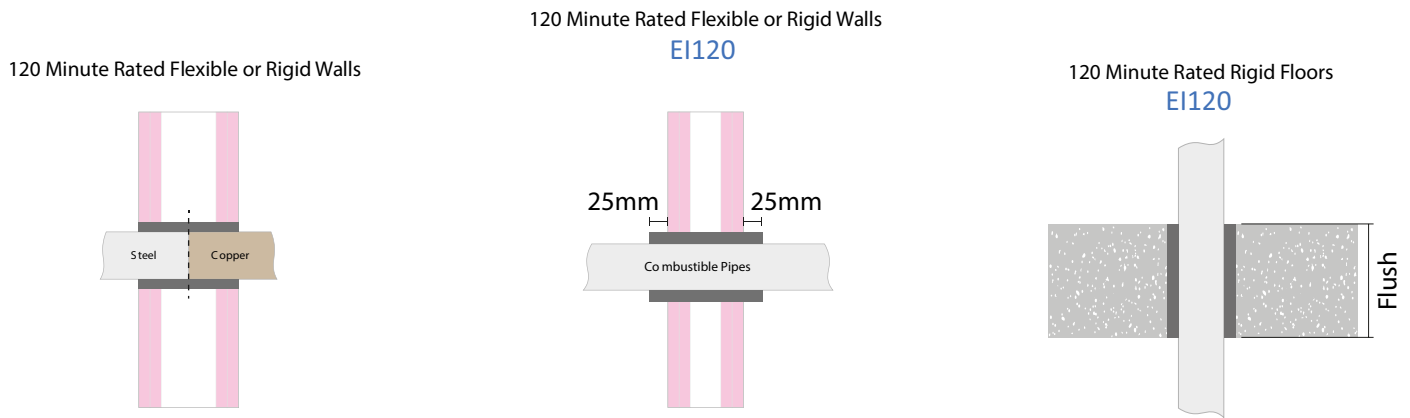
Siniat GTEC Fire Board SE Plasterboard 2x12.5mm

Test Standard	Pipe Size Range (mm)	Pipe Wall Thickness (mm)	Material	Min. Protrusion "A" (mm)	Min. Sleeve Length "B" (mm)	Min. Sleeve Length (mm)	Pipe Insulation* Required	Fire Rating	End Cap Configuration	Report No.
EN 1366-3	15-110	3.2	PVC-U / PVC-C	25	25	180	N	EI90	U/U, C/U, U/C, C/C	WF 422553
EN 1366-3	15-82	3.2	PVC-U / PVC-C	50	25	205	N	EI90	U/U, C/U, U/C, C/C	WF 422554
EN 1366-3	15-36	1.8	ABS	50	25	205	N	E90/EI45	U/U, C/U, U/C, C/C	WF 422555
EN 1366-2	15-43	1.9	ABS	50	25	180	N	EI90	U/U, C/U, U/C, C/C	WF 422555
EN 1366-3	15-55	2.0	ABS	50	25	180	N	EI90	U/U, C/U, U/C, C/C	WF 422556

Service Support must be max. 300mm from the surface of the wall

Seals must be minimum 200mm apart

Installation Variations



Test Standard	Material	Pipe Size Range (mm)	Wall Thickness (mm)	Min. Protrusion in Floors (mm)	Min. Protrusion in Walls (mm)	Insulated / Uninsulated	Fire Rating		End Cap Configuration	Report No.
							Integrity	Insulation		
BS 476 Pt. 20	Steel	22-165	2.5-14.2	0	0	Uninsulated	120	0	C/C	A03187
BS 476 Pt. 20	Copper	12-160	2.5-14.2	0	0	Uninsulated	120	0	C/C	A03187
BS 476 Pt. 20	Polybutylene	12-28	2-3.5	0	0	Uninsulated	120	120	C/C	A03187
BS 476 Pt. 20	PVC	55-82	3-4.2	0	25	Uninsulated	120	120	C/C	A03187
BS 476 Pt. 20	PVC	110	3.2-4.2	0	25	Uninsulated	120	60	C/C	A03187
BS 476 Pt. 20	PVC	160	3.2-4.2	0	25	Uninsulated	120	90	C/C	A03187

Rigid floors must be rated to 120 minutes fire resistance and consist of masonry (600kg/m³ to 1500kg/m³), low density concrete (min. 1100kg/m³) or high density concrete (max. 2400kg/m³)

Rigid walls must be rated to 120 minutes fire resistance and consist of masonry (600kg/m³ to 1500kg/m³)

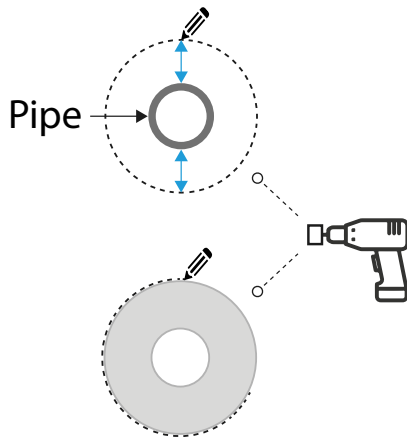
Flexible walls must be plasterboard clad steel or timber stud partitions and rated to 120 minutes fire resistance

Length of Fire Sleeve must be as per the depth of the wall or floor plus any required protrusion as stated in the table above

Please refer to Report A03187 for more information on the approved applications

Individual seal openings must be minimum 200mm apart

Fitting Instructions

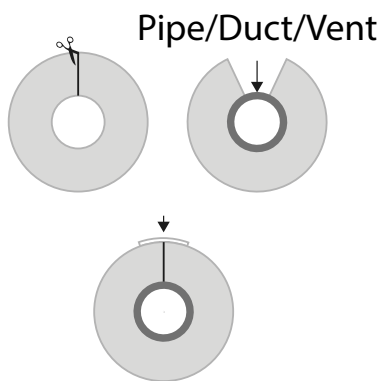


Step 1a

If using a hole cutter for circular holes, ensure that the correct fire sleeve wall thickness (25mm + 25mm) 50mm total is added to the diameter of the pipe, this equals the aperture size. Cut the hole through the substrate using the correct blade, in the required location.

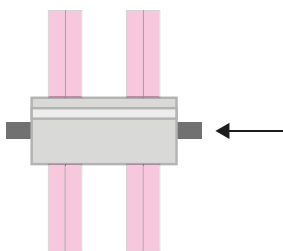
Step 1b

If cutting without a hole cutter, using a pencil, draw around the fire sleeve at the required position of the aperture, ensure a tightly marked line. Use this line to cut the aperture through the substrate, using the required equipment as appropriate.



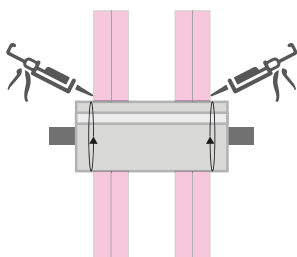
Step 2

Unless the sleeve can be slid down the length of pipe/vent/duct to the aperture, carefully cut along the length of the fire sleeve, using a sharp knife or scissors, on a rectangular duct/vent cut centrally to one of the sides, place the sleeve around the pipe/duct/vent close to the aperture, and apply foil tape over the joint, where the sleeve was cut.



Step 3

Push gently on the sleeve to pass it through the wall, if the sleeve covering starts to tear or if excessive resistance is felt, pull the sleeve back and trim the aperture. The sleeve should be pushed into the required position, ensuring that the required length of sleeve protrudes on either side of the wall.



Step 4 (If required)

If required for the purpose of smoke and draft stop, air or water tightness and airborne sound insulation, the gap between opening edge and fire sleeve may be sealed off by a suitable acrylic intumescent mastic construction sealant approved for penetration sealing applications.

Tools / Fixings

- Knife
- Aluminium foil repair tape
- Hole cutting tools as required for substrate

Intended Use

Around pipes used for the movement of foul or clean water, hot water and cold water.

Maintenance

No active maintenance required, where alterations are made around the product it should be checked visually to ensure that the product is still installed as per fitting instructions and tested systems.

Storage

Both un-cut and cut products should be packed to prevent movement and abrasion during transit and to prevent absorption of water. Otherwise normal safe precautions for storage can be used. To avoid damage and distortion, store on a smooth level surface, in a fully supported position off the ground and in a dry place.

Astro Thermal Fire PS is packed in card cartons and is not considered to be a dense material, but care should be taken not to exceed safe working loads for equipment and storage shelves or racks.

Installation

We have technical representatives who provide assistance in the selection and specification of the products on this site and should be consulted for exact installation and product suitability. Ensure an early engagement with ourselves, designers, main contractor and specialist installers before any installation. Other trades and/or manufacturers may need to be consulted. For in-depth information, specification and technical advice please call our Head Office on tel [01329 844 500](tel:01329844500) or email sales@astroflame.com

Maintenance

All interested parties, designer, specifier, main contractor and specialist installers should provide access to allow the fire stopping seals to be regularly inspected and maintained, as well as records kept of such maintenance at minimum periods of 12 months, as required by the Regulatory Reform Order, and repaired if necessary. Reference should be made to ASFP TGD 17 – Code of Practice for the Installation and Inspection of Fire Stopping.

Competency

It is vital that those entrusted to design or install a fire stopping product have the necessary levels of competence to undertake the task professionally and thoroughly. The level of competency required will be commensurate with the expected complexity of the building. All designers must eliminate, reduce or control foreseeable risks that may arise during installation, construction or maintenance when preparing or modifying designs. Clients should ensure that the principal designer and principal contractor carry out their duties under CDM regulations. The ASFP foundation course in passive fire protection provides essential knowledge as part of demonstrating competency and understanding in this key fire protection specialism.

Additional Notes

Please refer to the ETA sheet for fields of application for this product. For further information on installation requirements please refer to the duct manufacturer data and wall specification to ensure the compatibility of this product, if in doubt please contact the technical team with services and wall specification on tel [01329 844 500](tel:01329844500) or email sales@astroflame.com

As part of our policy of ongoing improvements, we reserve the right to modify, alter or change product specifications without giving notice. Product illustrations are representations only. All information contained in this document is provided for guidance only, and as ASTROFLAME (FIRE SEALS) LTD has no control over the specific application or installation methods of the products, or of the prevailing site conditions, no warranties expressed or implied are intended to be given as to the actual performance of the products mentioned or referred to, and no liability whatsoever will be accepted for any loss, damage or injury arising from the use of the information given of products mentioned or referred to herein.

The above information to the best of our knowledge is true and accurate and based upon current test data and is supplied for your guidance only. Customers should satisfy themselves to the suitability of the product based on the products limitation of applications and that the product is fit for purpose for their intended use and no guarantee is given or implied since the conditions of actual use are beyond our control. ASTROFLAME (FIRE SEALS) LTD, disclaim any liability for loss, damage or other expense arising from the use of information, data or products mentioned or referred to and reserve the right to change any details or specifications without notice. If you are in any doubt as to the suitability of this product for your intended application please contact our technical team on 01329 844500 or email sales@astroflame.com and we will contact you.